

CATCHLIGHT

CROSSINGS

NEW MIXED-USE RETAIL OPPORTUNITY

DESTINATION PARKWAY | ORLANDO, FL 32819

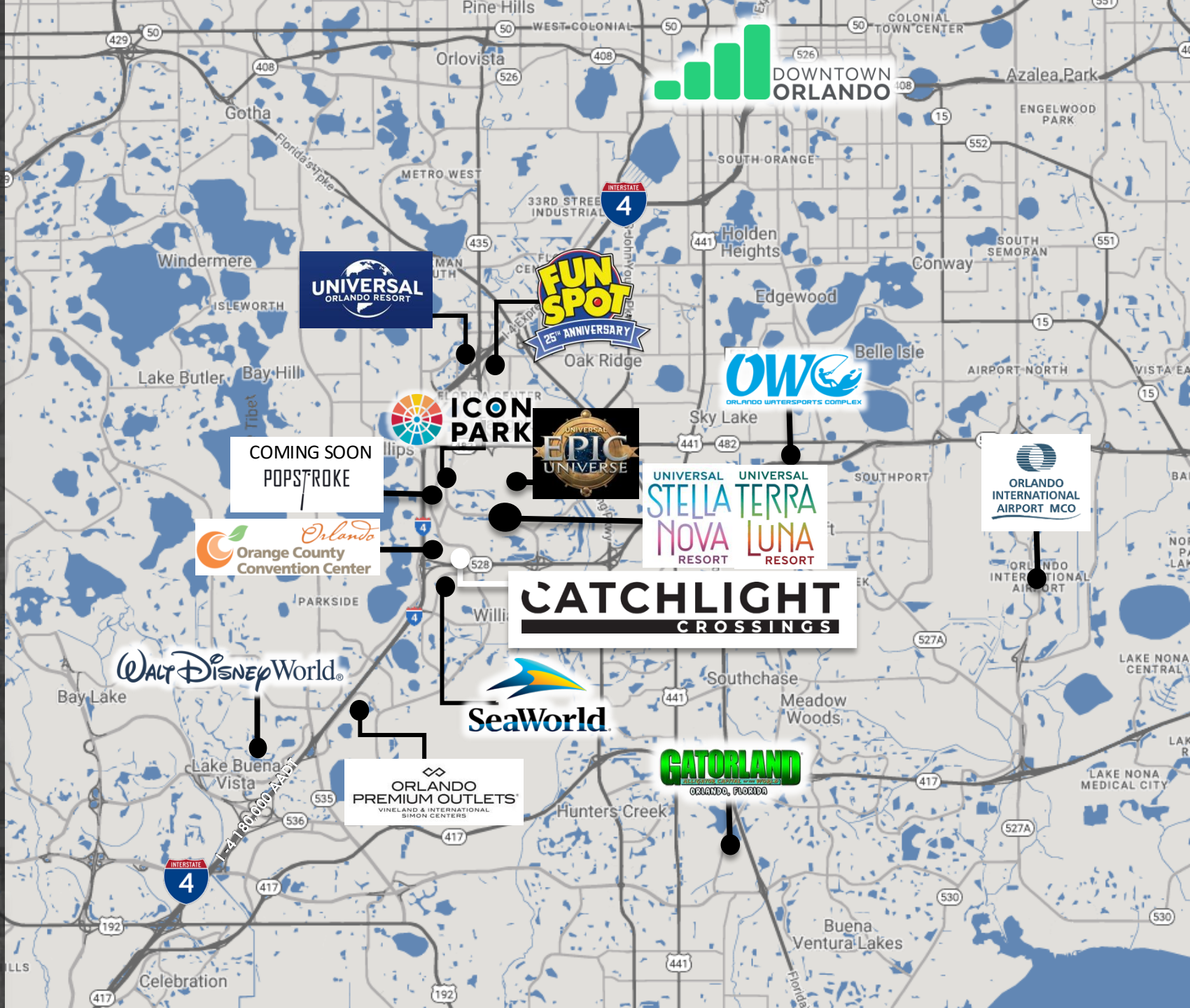
1,000 ON-SITE UNITS

NOW LEASING

CURATED RETAIL | Q1 2027 DELIVERY



LOCATION



DOWNTOWN ORLANDO



COMING SOON
POPSTROKE



DEMOGRAPHICS



POPULATION

1 MI- 6,308
3 MI- 52,222
5 MI- 194,953
10 MIN- 59,057



AVG HH INCOME

1 MI- \$108,271
3 MI- \$118,238
5 MI- \$112,297
10 MIN- \$107,783



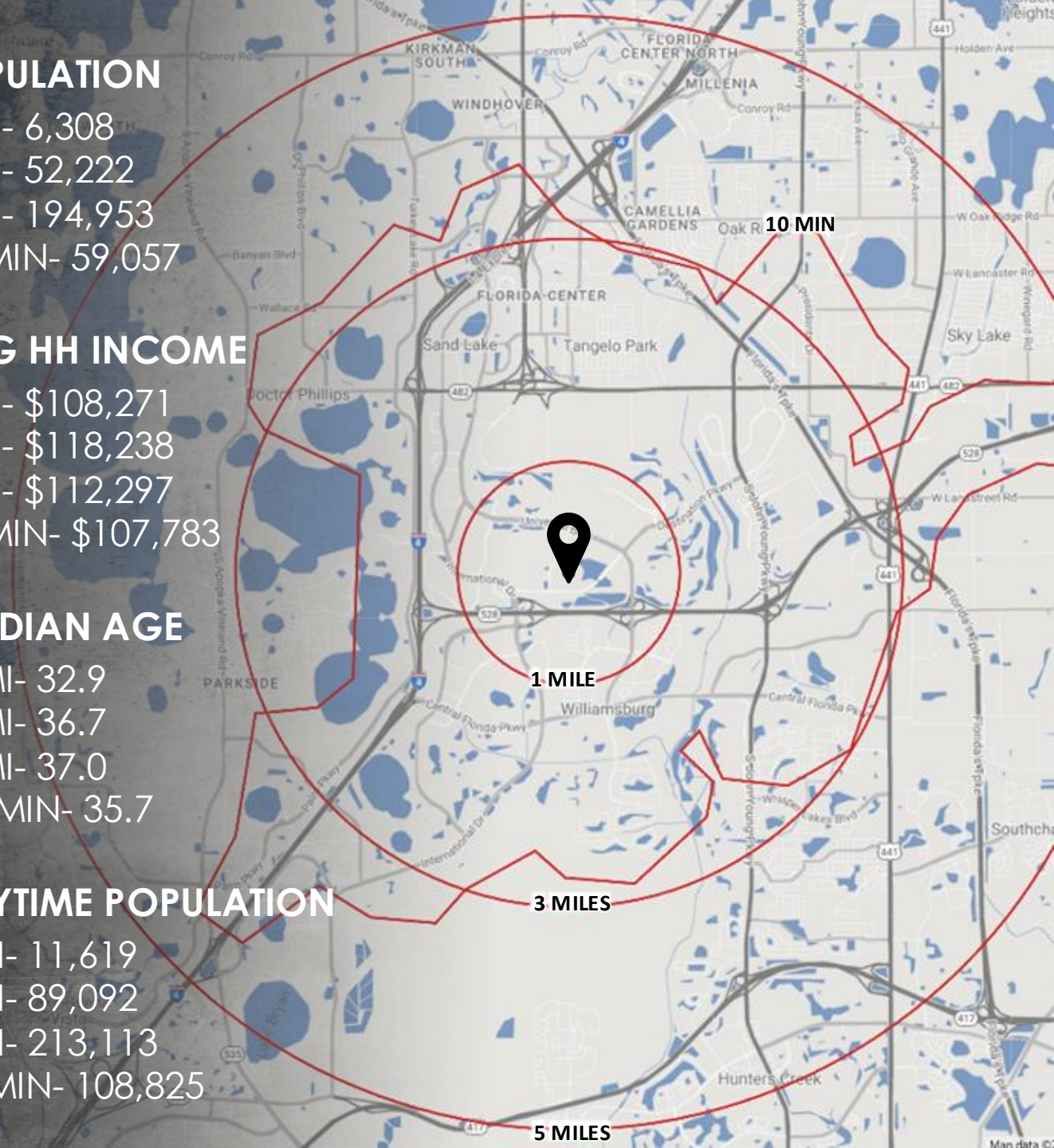
MEDIAN AGE

1 MI- 32.9
3 MI- 36.7
5 MI- 37.0
10 MIN- 35.7

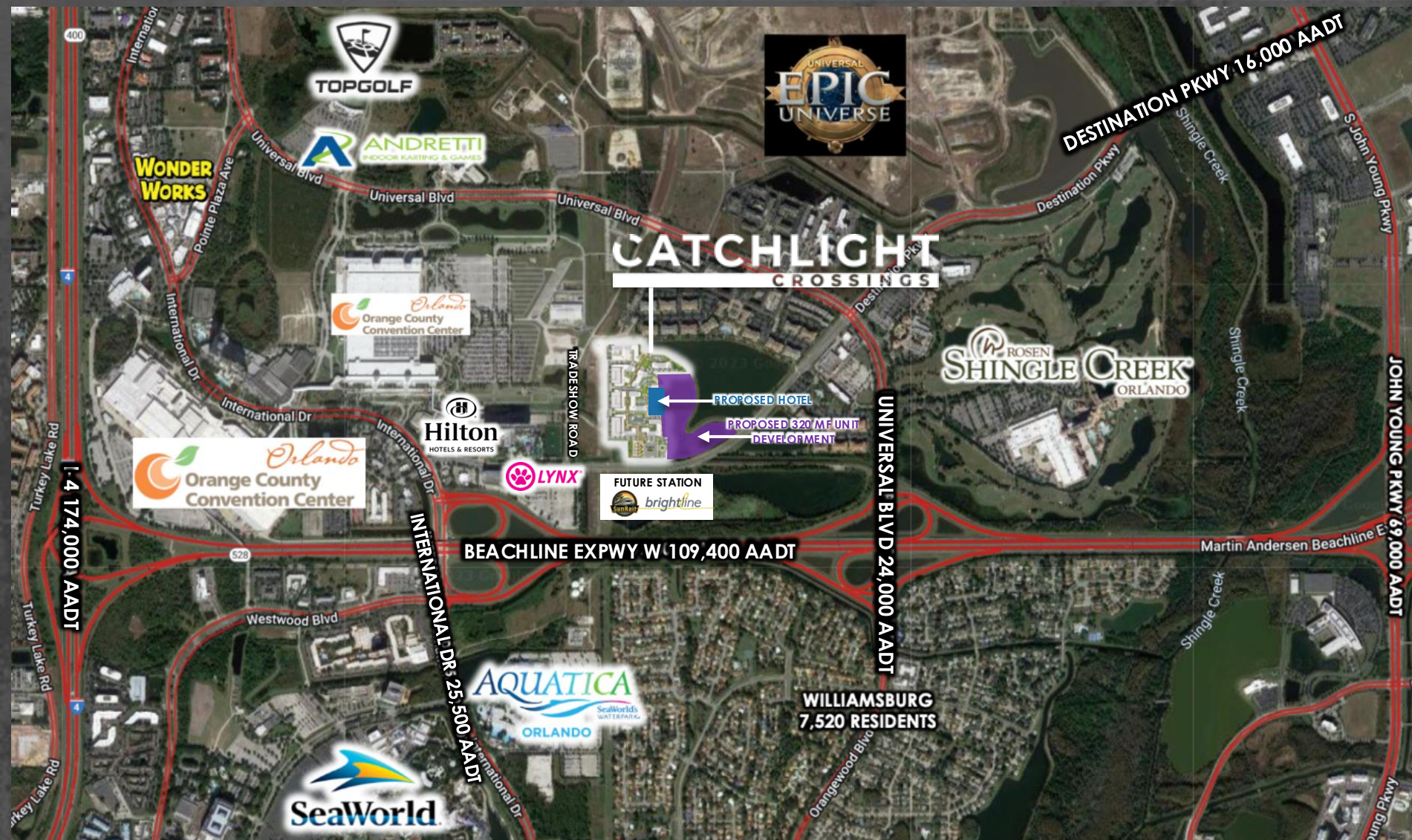


DAYTIME POPULATION

1 MI- 11,619
3 MI- 89,092
5 MI- 213,113
10 MIN- 108,825



SURROUNDING AERIAL





CATCHLIGHT
CROSSINGS

PROJECT PLAN



SITE ATTRIBUTES

7,235 SF

RETAIL GLA

\$118,238

AVG HH INCOME
(3 MILES)

1,000

MULTI-FAMILY,
WORKFORCE UNITS

ON-SITE | LARGEST WORKFORCE HOUSING
PROJECT IN THE USA

CLICK OR SCAN BELOW TO
SEE CONSTRUCTION
PROGRESS



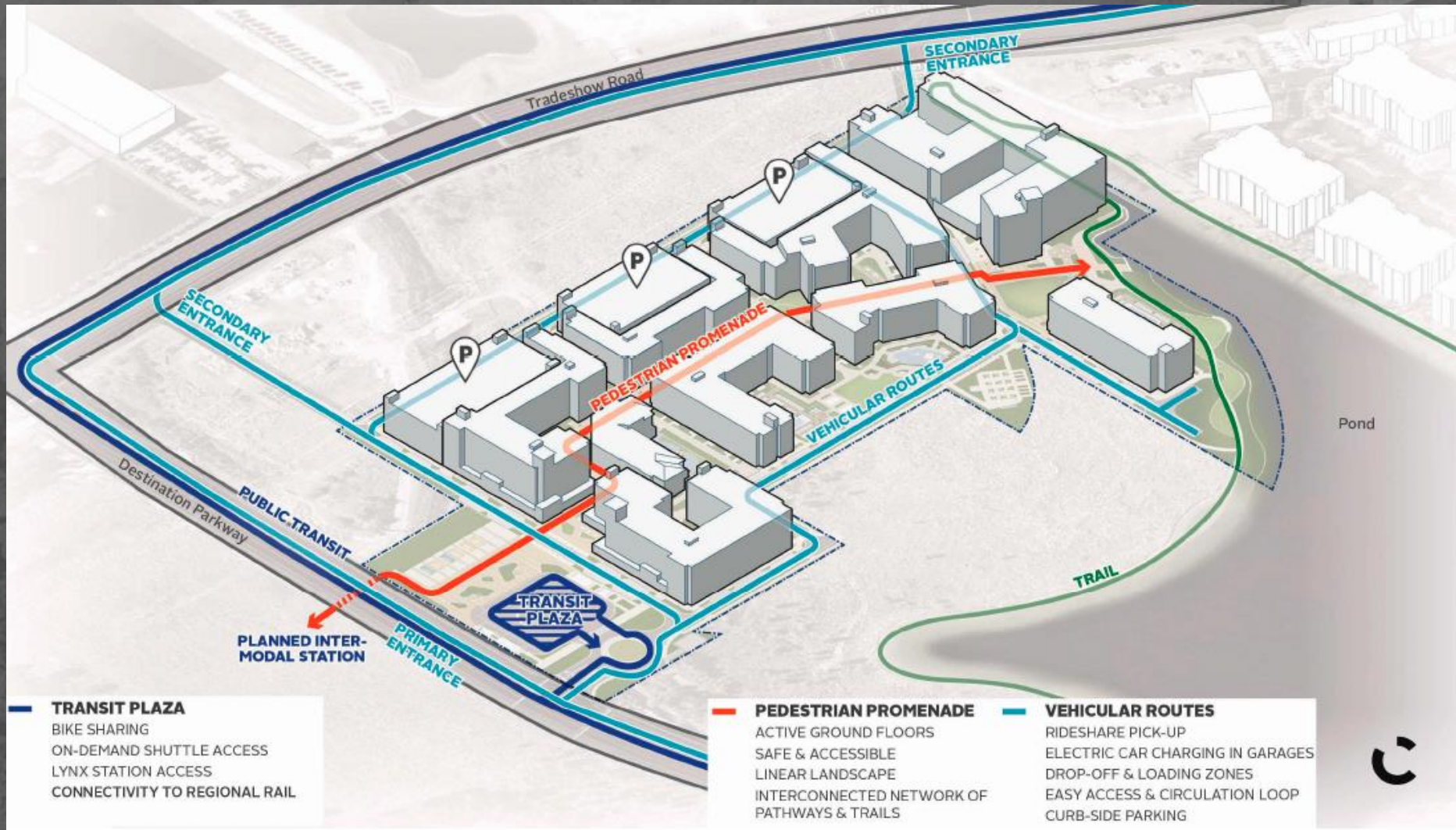
ON-SITE

PRESCHOOL/DAYCARE,
UCF CLASSROOM,
11,500 SF COMMUNITY HEALTH CENTER

CROSSINGS

CATCRAFT

ACCESS & CIRCULATION



COMMUNITY AMENITIES

COMMUNITY ANCHORS

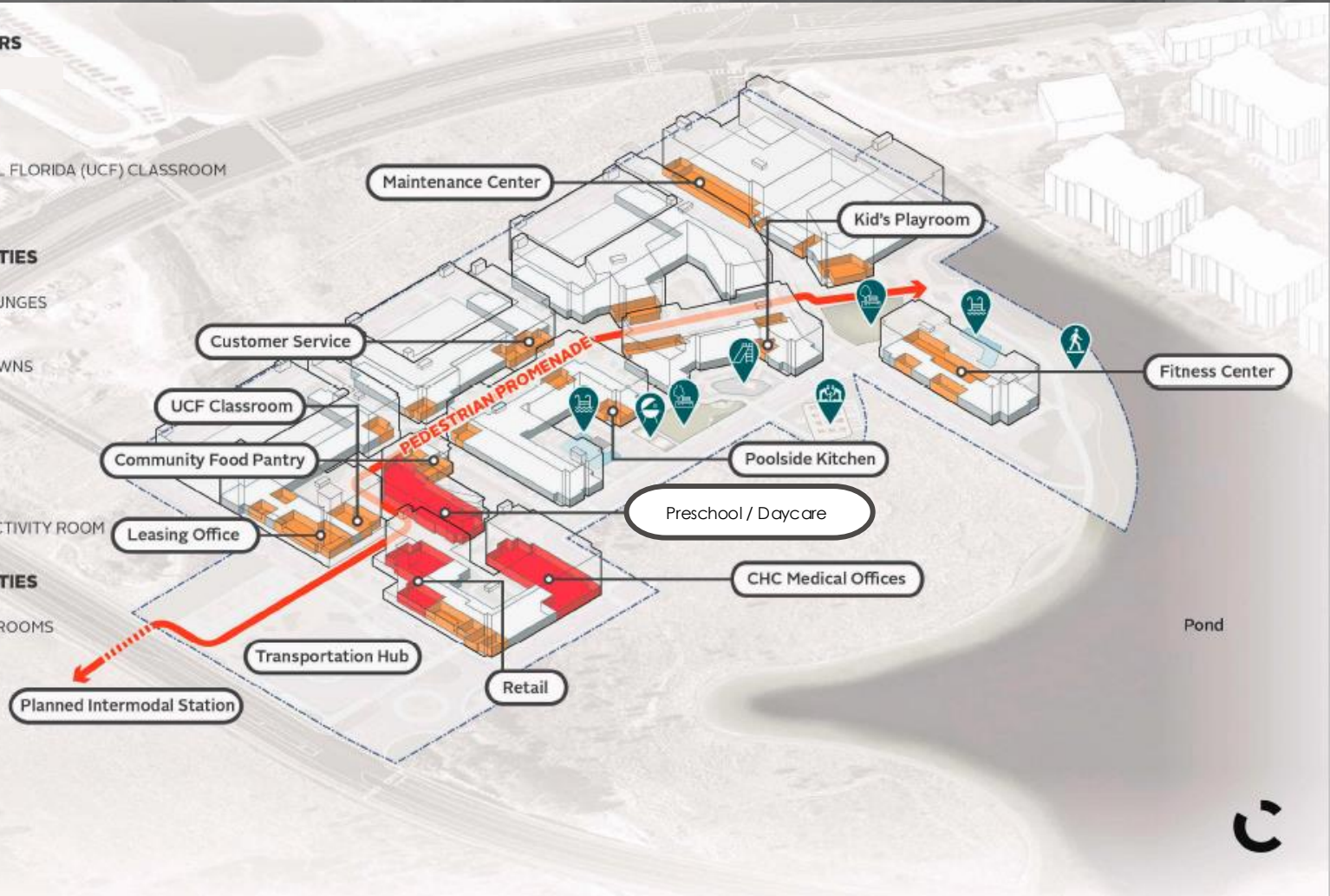
- Preschool / Daycare
- RETAIL
- TRANSPORTATION HUB
- UNIVERSITY OF CENTRAL FLORIDA (UCF) CLASSROOM
- CHC MEDICAL OFFICES

RESIDENTIAL AMENITIES (OUTDOOR)

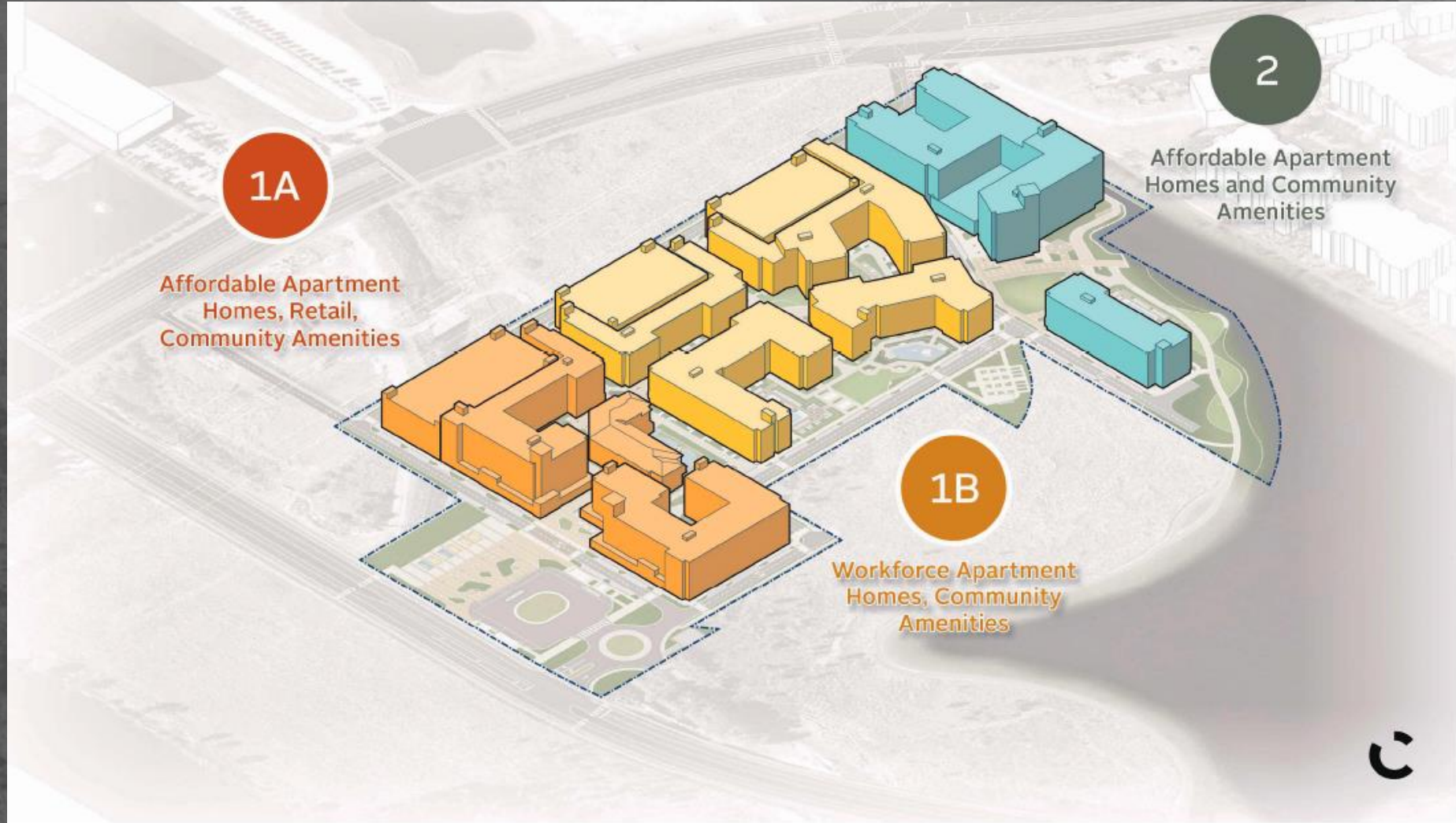
- SWIMMING POOLS & LOUNGES
- PLAYGROUND
- EVENT & GATHERING LAWNS
- PICNIC & BBQ AREA
- COMMUNITY GARDEN
- WATERFRONT TRAIL
- KID'S PLAYROOM
- POOLSIDE KITCHEN & ACTIVITY ROOM

RESIDENTIAL AMENITIES (INDOOR)

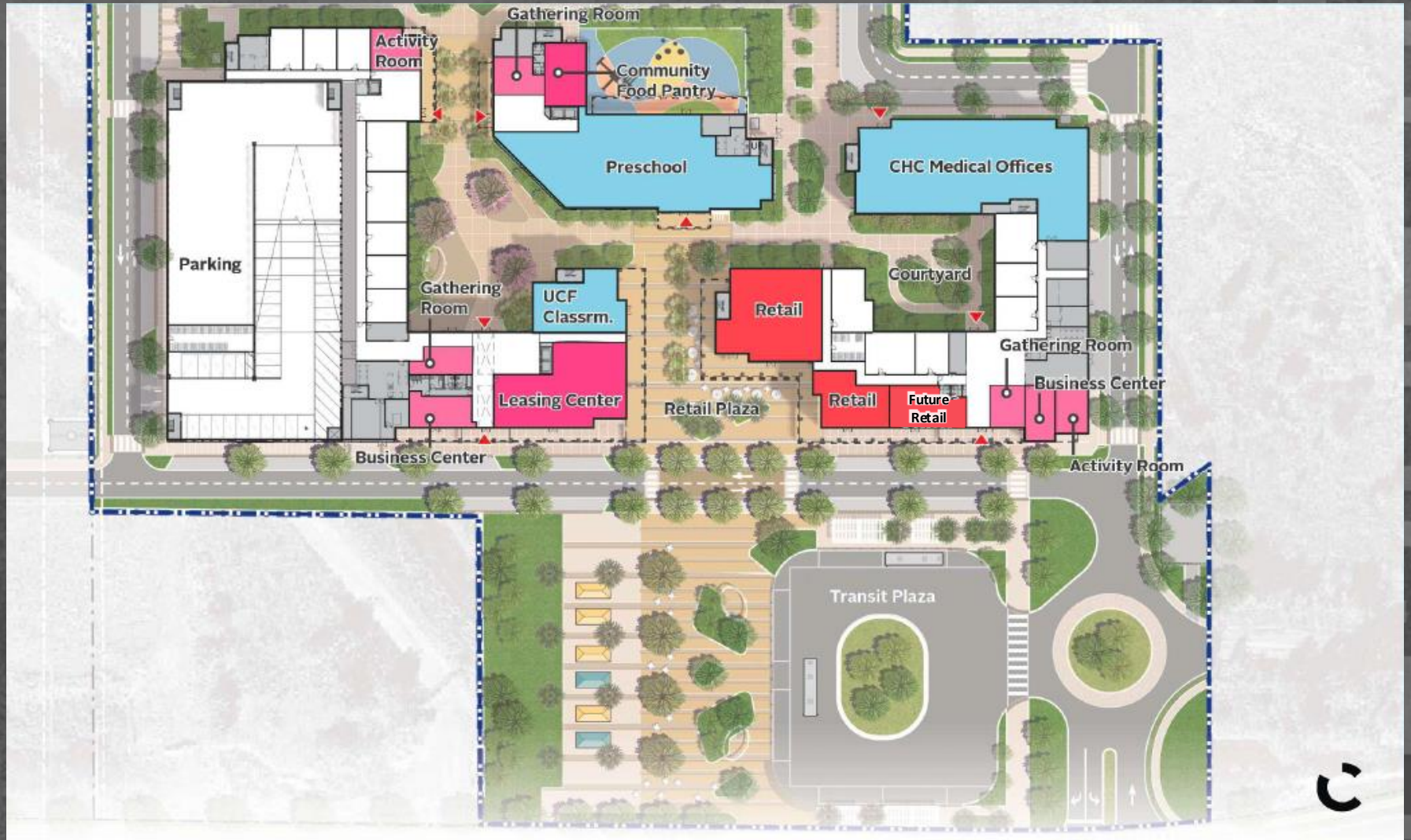
- ACTIVITY & GATHERING ROOMS
- LEASING CENTER
- FITNESS CENTER
- MAKERS SPACE
- GAME ROOM
- BUSINESS CENTERS
- COMMUNITY KITCHEN



DEVELOPMENT PHASING



GROUND FLOOR AMENITIES PHASE 1



RETAIL MIX VISION

ATTRACT A DIVERSE TENANT LINE-UP THAT ADDS VALUE TO THE AFFORDABLE HOUSING COMPONENT & ALSO CATERS TO THE SURROUNDING COMMUNITY



TARGET USERS:

- SMALL GROCERY
- QSR
- ENTERTAINMENT
- SERVICE/WELLNESS



CATCHLIGHT

CROSSINGS



Lic. Real Estate Broker

SERENITY LORENZ
Senior Leasing Manager
serenity@acrefl.com
(904) 887-3302

SANDI BARGFREDE
Managing Partner
sandi@acrefl.com
(407) 491-8149

SERVING RETAIL MARKETS THROUGHOUT FLORIDA

This presentation is provided for informational purposes only and does not constitute legal, financial, or investment advice. It is intended solely to provide general information about the properties and services offered by ACRE Commercial, its affiliates, partners, and subsidiaries. All information contained herein is obtained from sources deemed reliable; however, we make no representations or warranties, express or implied, regarding the accuracy, completeness, or reliability of any information provided. Prospective buyers, sellers, landlords, tenants, investors, or other parties should conduct their own due diligence and consult with appropriate professionals (including legal, financial, and real estate advisors) before making any decisions or entering into any agreements. ©2026. All rights reserved.