

OFFICE/RETAIL SPACE FOR LEASE

OFFICE/RETAIL LEASING OPPORTUNITY IN BRANDON FLORIDA

156 W ROBERTSON ST | BRANDON, FL 33511



BROOKE LOGALBO
Senior Leasing Manager
brooke@acrefl.com
(407) 721-3669

WILLOW FERRELLI
Managing Partner & Broker
willow@acrefl.com
(407) 453-1858



LICENSED REAL ESTATE BROKER
www.acrefl.com

FOLLOW US, WE'RE VERY SOCIAL!



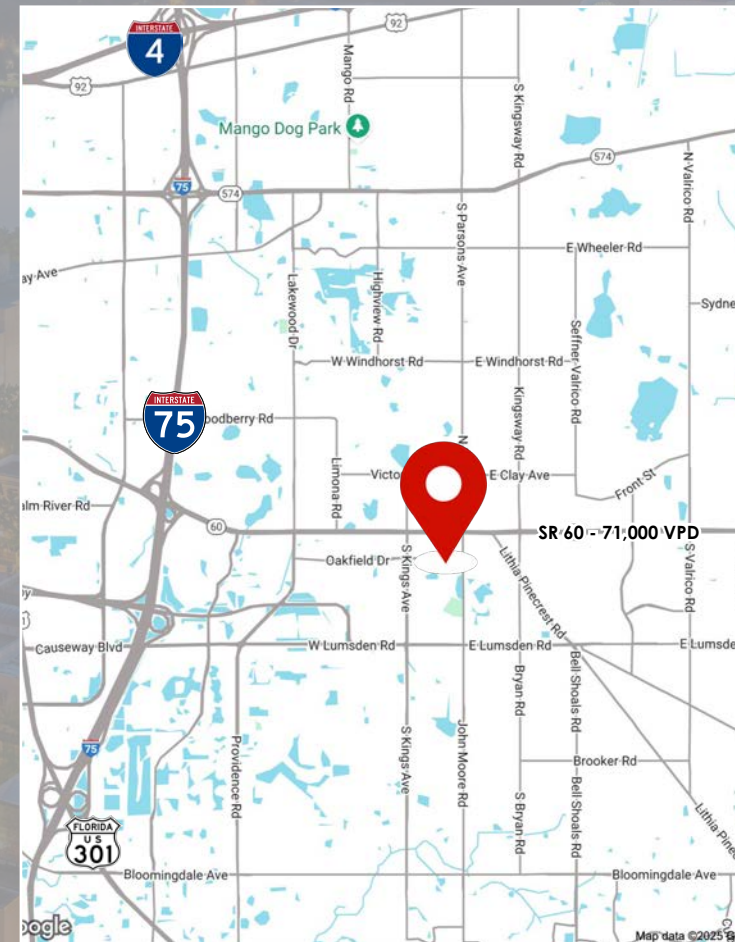
PROPERTY FEATURES

156 W. ROBERTSON ST | BRANDON, FL

- ◇ Available: 1,666 SF
- ◇ Located just South of W. Brandon Blvd., with Direct Exposure to a Traffic Count Exceeding 71,000 AADT
- ◇ Situated in Brandon's Amenity-Rich Core, the Property Offers Employees Direct Access to Abundant Dining, Shopping, and Services just Steps Away
- ◇ Average Household Income within a 3-Mile Radius Exceeds \$113,000 Annually
- ◇ Abundant Parking Available: 14 Spaces

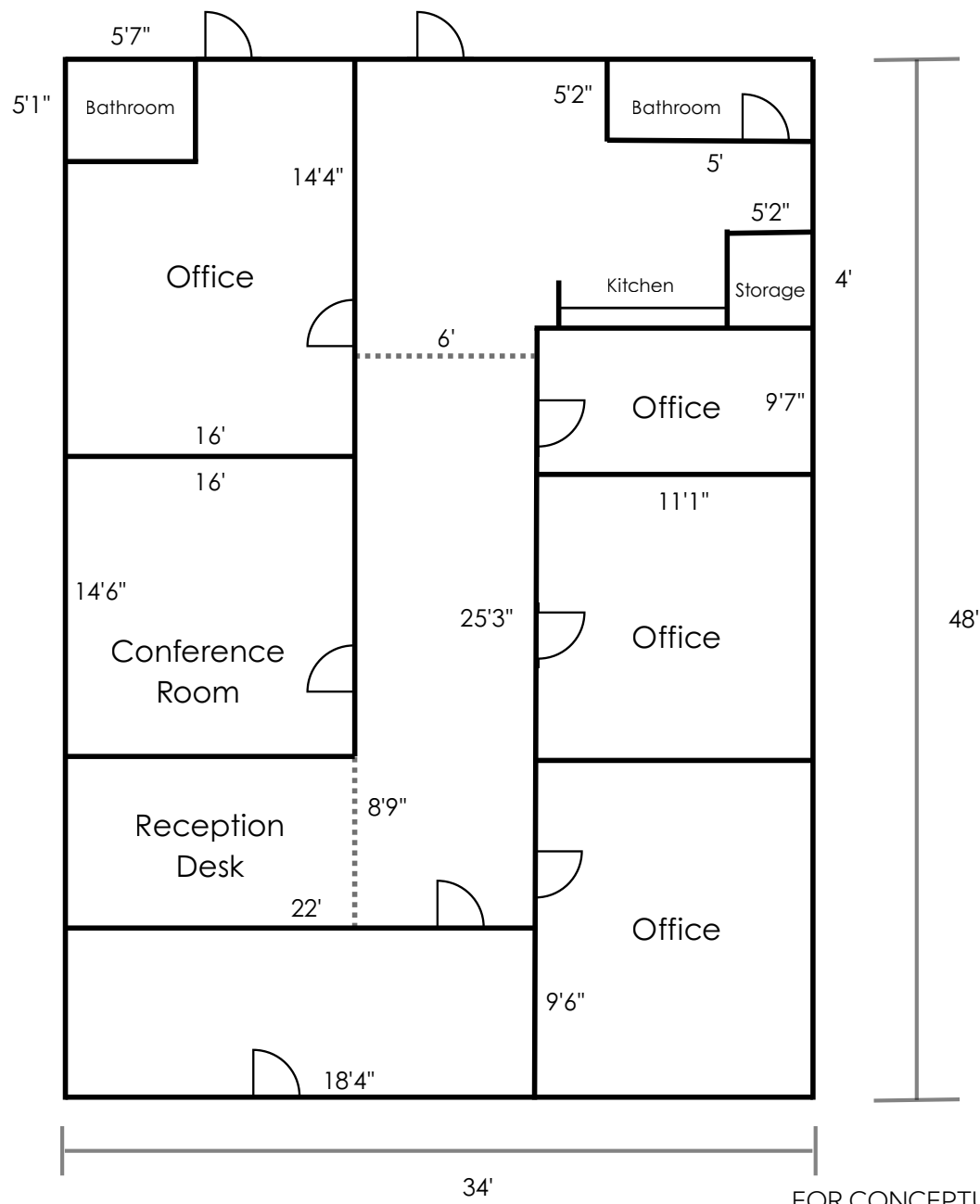
CONNECTIVITY IS KEY!

156 W. Robertson Street is centrally located in Brandon, surrounded by an amenity-rich trade area anchored by Publix, Target, Walmart, Starbucks, and The Home Depot. The property provides retailers with excellent visibility and convenient access, drawing from both strong daytime traffic and a robust residential base. Average household incomes exceed \$113,000 within a 3-mile radius, further enhancing the area's appeal. With immediate access to I-75, Selmon Expressway, and Brandon Blvd., the site offers outstanding regional connectivity across the Tampa Bay market.



SITE PLAN

156 W. ROBERTSON ST | BRANDON, FL



AVAILABLE
1,666 SF

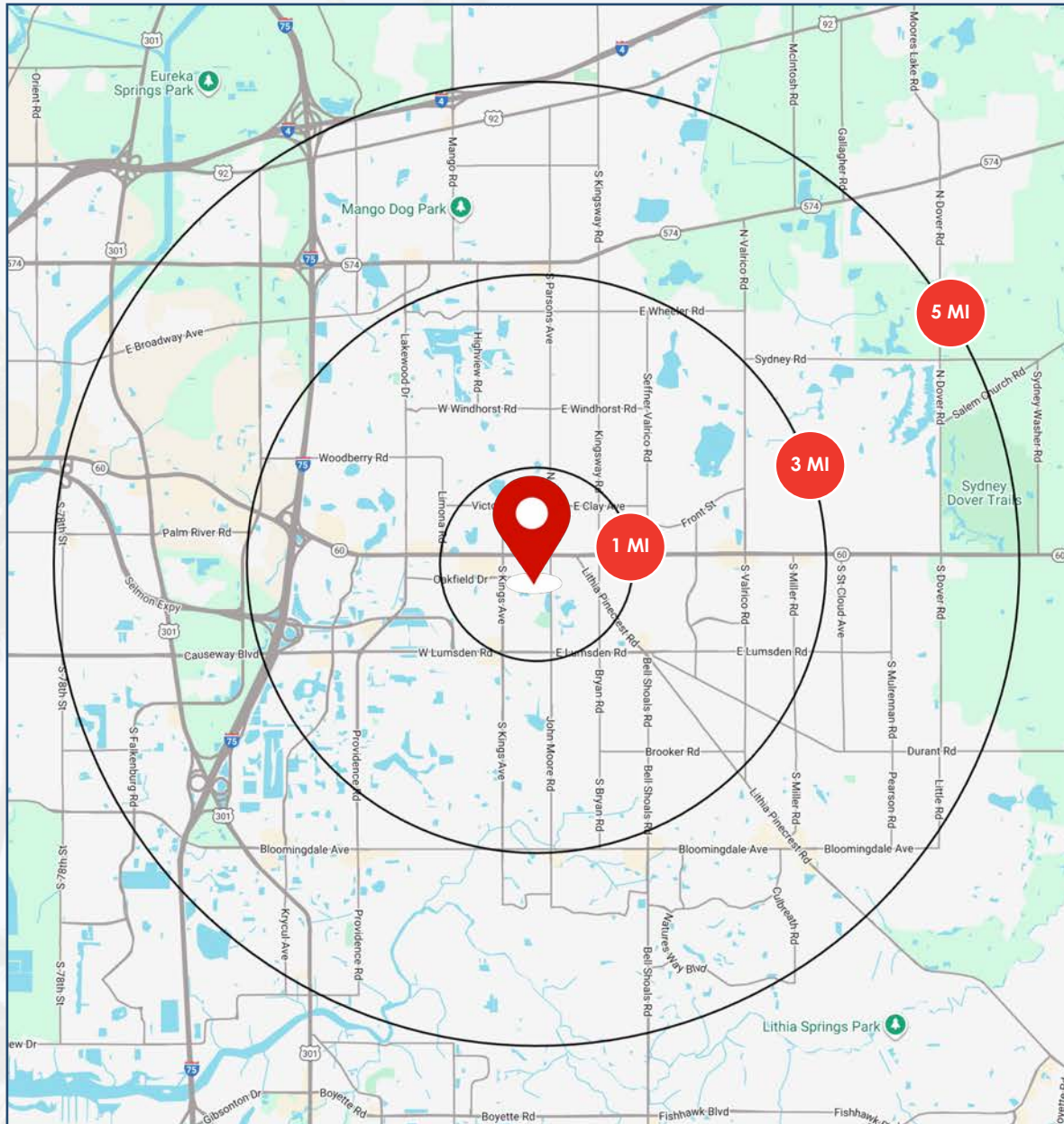
FOR CONCEPTUAL PURPOSES ONLY | DIMENSIONS TO BE VERIFIED

PHOTOS

156 W. ROBERTSON ST | BRANDON, FL



AREA DEMOGRAPHICS



POPULATION



1 MI	9,361
3 MI	103,291
5 MI	232,721

AVG HH INCOME



1 MI	\$78,675
3 MI	\$113,580
5 MI	\$110,964

MEDIAN AGE



1 MI	37.8
3 MI	38.5
5 MI	37.9

DAYTIME POPULATION



1 MI	13,691
3 MI	67,304
5 MI	157,645

I-75 150,000 AADT

BRANDON BLVD 71,000 AADT

Legend:

- clothing
- electronics
- groceries
- home goods
- restaurants
- retail
- services
- specialty
- travel
- vehicles
- wellness

OFFICE/RETAIL SPACE FOR LEASE



LICENSED REAL ESTATE BROKER

BROOKE LOGALBO

Senior Leasing Manager

brooke@acrefl.com

407.721.3669

WILLOW FERRELLI

Managing Partner & Broker

willow@acrefl.com

(407) 453-1858

This presentation is provided for informational purposes only and does not constitute legal, financial, or investment advice. It is intended solely to provide general information about the properties and services offered by ACRE Commercial, its affiliates, partners, and subsidiaries. All information contained herein is obtained from sources deemed reliable; however, we make no representations or warranties, express or implied, regarding the accuracy, completeness, or reliability of any information provided. Prospective buyers, sellers, landlords, tenants, investors, or other parties should conduct their own due diligence and consult with appropriate professionals (including legal, financial, and real estate advisors) before making any decisions or entering into any agreements. ©2025. All rights reserved.