

27 E ROBINSON*Downtown Orlando***ADDRESS** 27 E Robinson St, Orlando, FL 32801**RETAIL GLA** 3,081 SF**AVAILABLE** FULLY LEASED**POPULATION (3 mi)** 95,217**TRAFFIC** 17,793+ AADT

Retail opportunity in the heart of the Central Business District in Downtown Orlando. Renovations underway including storefront, garage doors, and wall mural.

317 N ORANGE*Downtown Orlando***ADDRESS** 317 N Orange Ave, Orlando, FL 32801**RETAIL GLA** 4,130 SF**AVAILABLE** FULLY LEASED**POPULATION (3 mi)** 95,129**TRAFFIC** 10,500+ AADT

Premier space in the heart of Downtown Orlando. Ideal free-standing building for office, medical, or retail space. Features excellent visibility and high traffic counts.

469 S CENTRAL*Oviedo***ADDRESS** 469 S Central Ave, Oviedo, FL 32765**RETAIL GLA** 1,800 SF**AVAILABLE** FULLY LEASED**POPULATION (3 mi)** 56,958**TRAFFIC** 39,000+ AADT

Prime retail space in bustling Oviedo! Ideal space for a boutique, office or medical practice. Space features full kitchen, pylon signage, ample parking and more.

400 NORTH*Maitland***ADDRESS** 400 N. Orlando Ave, Maitland, FL 32751**RETAIL GLA** 26,000 SF**AVAILABLE** 1,225- 3,337 SF**POPULATION (3 mi)** 94,840**TRAFFIC** 35,000+ AADT

Join Grain & Berry, Salon Lofts, Pita Mediterranean, ETF Fitness, Slidder's Pizza and more. Located in strong US-17/92 corridor with affluent demos and excellent visibility

AVE TAMPA RIVERWALK

Downtown Tampa



ADDRESS 160 W Tyler St, Tampa, FL 33602
RETAIL GLA 12,919 SF
AVAILABLE 2,507- 2,517 SF
POPULATION (3 mi) 119,000
TRAFFIC 40,000+ AADT

Ground floor retail/restaurant options steps from The Straz PAC and Tampa's famed Riverwalk. High-end mixed-use development in the heart of Downtown Tampa.

BOARDWALK SHOPPES

Altamonte Springs



ADDRESS 1002 W. SR 436, Altamonte Springs, FL 32714
RETAIL GLA 50,800 SF
AVAILABLE 1,000 - 2,066 SF
POPULATION (3 mi) 103,659
TRAFFIC 59,000+ AADT

2nd gen fitness available. Newly renovated center. Join the strong tenant lineup including Frogger's Grill, The Crystal Ballroom, Ootoya Sushi and more!

BOARDWALK II

Altamonte Springs



ADDRESS 1064 W. SR 436, Altamonte Springs, FL 32714
RETAIL GLA 10,741 SF
AVAILABLE 1,300-5,760 SF
POPULATION (3 mi) 103,659
TRAFFIC 59,000+ AADT

2nd generation restaurant space and 2nd generation endcap available. Located at a signalized intersection with excellent visibility.

BRANDON LAKES PLAZA

Brandon



ADDRESS 2020 W. Brandon Blvd, Brandon, FL 33511
RETAIL GLA 34,082 SF
AVAILABLE 2,192 SF
POPULATION (3 mi) 91,773
TRAFFIC 30,000+ AADT

One space left in Brandon's retail corridor. Anchored by a Top 10 grossing Outback Steakhouse, this center has high traffic counts and optimal visibility.

CAMDEN LAKE EOLA

Orlando



ADDRESS 520 E Church St, Orlando, FL 32801

RETAIL GLA 6,477 SF

AVAILABLE 2,489 SF

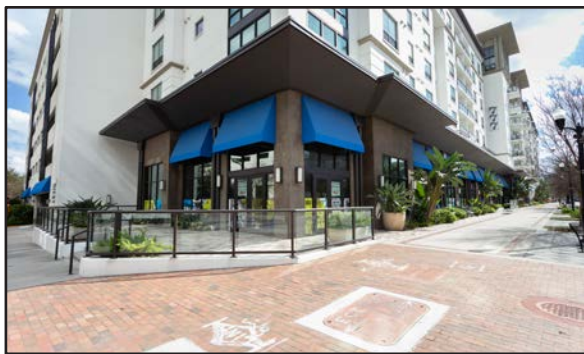
POPULATION (3 mi) 103,656

HH INCOME (1MI) \$87,773

Retail space available in Downtown Orlando's #1 District! End-cap with outdoor seating capability. Excellent visibility in a highly walkable neighborhood.

CAMDEN NORTH QUARTER

Orlando



ADDRESS 777 N Orange Ave, Orlando, FL 32801

RETAIL GLA 7,355 SF

AVAILABLE FULLY LEASED

POPULATION (3 mi) 90,447

TRAFFIC 16,000+ AADT

Retail space in mixed-use development. High walkability to Downtown and Lake Ivanhoe districts. Minutes from two I-4 exchanges. Tenants include Gravity Taproom, F45 Training, HB Med Spa, and Natsu sushi.

CAMDEN THORNTON PARK

Orlando



ADDRESS 420 E Church St, Orlando, FL 32801

AVAILABLE 2,413 SF

POPULATION (3 mi) 101,104

HH INCOME (1MI) \$91,154

Prime endcap retail space available. Space located in Downtown Orlando's #1 district and surrounded by strong residence & retailers.

CITY PLACE

Maitland



ADDRESS 1100 S Orlando Ave, Winter Park, FL 32789

RETAIL GLA 6,704 SF

AVAILABLE FULLY LEASED

POPULATION (3 mi) 92,281

TRAFFIC 32,000+ AADT

Exceptional tenants include Bitebound, Café Don Juan, Chill N Ice and Tune Up at Winter Park's newest social destination. Space is newly renovated with excellent visibility on "Miracle Mile".

DOLPHIN VILLAGE

St. Pete Beach



ADDRESS 4655 Gulf Blvd, St. Pete Beach, FL 33706
RETAIL GLA 136,224 SF
AVAILABLE 907 - 7,736 SF
POPULATION (5 mi) 111,284
TRAFFIC 25,000+ AADT

New retail, office, and restaurant opportunities available in Publix anchored center. Directly across public beach access and public parking. Renovations underway!

ELLINGTON AT OVIEDO PARK

Oviedo



ADDRESS 222-234 E Mitchell Hammock Rd, Oviedo, FL 32765
RETAIL GLA 11,062 SF
AVAILABLE 860 SF
POPULATION (5 mi) 150,019
TRAFFIC 35,000+ AADT

Ground floor retail space in Oviedo's newest mixed-use development! Excellent visibility next to Oviedo on the Park and UCF. Join CFS coffee, Allora Day Spa, Violet's Ice Cream, and Jinya Ramen Bar.

DOWNTOWN TAMPA RETAIL

Downtown Tampa



ADDRESS NEC E Cass St x Governor St, Tampa, FL 33602
RETAIL GLA 32,518 SF
AVAILABLE 32,518 SF
POPULATION (3 mi) 112,610
TRAFFIC 8,800+ AADT

Anchor/junior anchor retail opportunity on ground floor of Encore community's newest mixed-use development. The site will feature a hotel, office, retail, and multifamily.

FANTASY PLAZA

Kissimmee



ADDRESS 2956 Vineland Rd, Kissimmee, FL 34746
RETAIL GLA 14,398 SF
AVAILABLE FULLY LEASED
POPULATION (5 mi) 136,362
TRAFFIC 37,000+ AADT

Newly renovated retail and office building with strong frontage on Vineland Road, a main thoroughfare through Orlando's tourist market. Minutes from Disney

DOWNTOWN ORLANDO RETAIL

Downtown Orlando



ADDRESS 401 N. Magnolia Avenue, Orlando, FL 32801
RETAIL GLA 3,255 SF
AVAILABLE 1,200 SF
POPULATION (3 mi) 103,104
TRAFFIC 16,736+ AADT

8-story/123 room hotel development on a prime corner in Downtown. Walking distance to Lake Eola, Courthouse, Creative Village and more.

JADE AT NORTH HYDE PARK

Tampa



ADDRESS 608 N Willow Ave, Tampa, FL 33606
RETAIL GLA 3,222 SF
AVAILABLE FULLY LEASED
POPULATION (3 mi) 130,509
HH INCOME \$96,243

Restaurant/Retail space in Tampa's expanding urban core. Ground floor opportunities in mixed-use development featuring 192 luxury apartments on-site.

KELLY PARK RETAIL

Apopka



ADDRESS NWC Kelly Park RD x Plymouth Sorrento Rd
Apopka, FL 32712
RETAIL GLA 35,500 SF
AVAILABLE 3,400-13,500 SF
POPULATION (3 mi) 130,509
HH INCOME \$96,243

Brand new retail opportunities in Apopka's newest luxury multi-family development. Ground-floor space with outdoor space. Seeking curated retailers and restaurants.

LARGO TOWN SQUARE

Largo

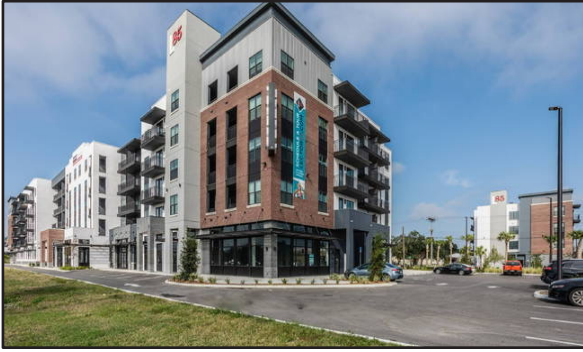


ADDRESS 3690 E Bay Dr, Largo, FL 33771
RETAIL GLA 37,574 SF
AVAILABLE 875 SF
POPULATION (3 mi) 113,080
TRAFFIC 64,000+ AADT

One space remaining! in busy Largo shopping center. Surrounded by strong co-tenants with excellent visibility and high traffic counts.

LECTOR 85 RETAIL

Tampa



ADDRESS 2409 E 2nd Ave. Tampa, FL 33605
RETAIL GLA 11,485 SF
AVAILABLE 3,306- 8,179 SF
POPULATION (3 mi) 91,042
TRAFFIC 25,500+ AADT

Premier brand-new retail on Adamo Drive in Historic YBOR City. Site neighbors IKEA and Coppertail Brewing Co. with excellent visibility.

LOCKWOOD SHOPPES

Oviedo



ADDRESS 1875 CR 419, Oviedo, FL 32765
RETAIL GLA 9,000 SF
AVAILABLE FULLY LEASED
POPULATION (3 mi) 51,162
TRAFFIC 30,000+ AADT

Well-maintained and highly visible retail center located at a signalized intersection. Direct access to the Winn-Dixie shopping center.

M2 AT MILLENIA

Orlando



ADDRESS 4150 Eastgate Drive, Orlando, FL 32839
RETAIL GLA 19,909 SF
AVAILABLE FULLY LEASED
POPULATION (3 mi) 111,558
HH INCOME \$48,458

Ground floor of the Millenia 700 luxury apartment complex. Strong surrounding retail in prime Mall at Millenia market (Top 10 Mall in the United States).

MAGNOLIA QUARTERS

Downtown Orlando



ADDRESS 47 E. Robinson St, Orlando, FL 32801
RETAIL GLA 33,720 SF
AVAILABLE 3,478 SF
POPULATION (3 mi) 95,217
TRAFFIC 18,000+ AADT

Walking distance to the Orange County Courthouse, Lake Eola, Creative Village and more. Join Craft & Common, Epic Axes, FedEx and Just 4 Dogs.

MAITLAND CITY CENTRE

Maitland



ADDRESS US 17-92 & Horatio Ave, Maitland, FL 32751
RETAIL GLA 32,516 SF
AVAILABLE 3,030 SF
POPULATION (3 mi) 94,670
TRAFFIC 52,000+ AADT

Highly visible + prominent new mixed-use community in the heart of Maitland, one of Central Florida's most affluent communities. 2nd Gen pizza restaurant available.

MAITLAND SOCIAL

Maitland



ADDRESS 360 E Horatio Ave, Maitland, FL 32751
RETAIL GLA 7,414 SF
AVAILABLE 1,426 SF
POPULATION (3 mi) 97,944
TRAFFIC 32,100+ AADT

Signature site featuring ample patio space and communal outdoor gathering areas. Class A redevelopment in the heart of affluent Maitland. Tenants include Foxtail Coffee Co., Vitality Bowls, Wave Asian Bistro & Sushi, and Urban Body Works.

NAVARA

Downtown Tampa



ADDRESS 921 N Central Avenue, Tampa, FL 33602
RETAIL GLA 2,500 SF
AVAILABLE 2,500 SF
POPULATION (3 mi) 121,204
TRAFFIC 7,804+ AADT

Excellent retail opportunity in Downtown Tampa. Ground floor of mixed-used development Navara, with 288 multi-family units on site. Surrounded by 890+ units.

NORTH POINTE PLACE

Orlando



ADDRESS 2902 N. Orange Ave, Orlando, FL 32804
RETAIL GLA 19,909 SF
AVAILABLE FULLY LEASED
POPULATION (3 mi) 89,495
TRAFFIC 36,000+ AADT

Prime medical/retail space directly across from the Advent Health Orlando campus. Tenant lineup includes Advent Health Pediatrics, OneBlood, Cranial Technologies and more.

PARK PLACE

Oviedo



ADDRESS 940 City Plaza Way, Oviedo, FL 32765
AVAILABLE 1,315 SF
POPULATION (3 mi) 57,701
AVG HH INCOME (3 mi) \$109,553

Prime retail space available directly across from Oviedo on the Park in Oviedo's new downtown! Gorgeous space with attached patio. More than 600 multifamily units in immediate area and 271 units on site.

RADIUS

Downtown Orlando



ADDRESS 361 Rosalind Ave, Orlando, FL 32801
RETAIL GLA 11,741 SF
AVAILABLE 706 SF
POPULATION (3 mi) 104,160
TRAFFIC 17,500+ AADT

New 13-story/389-unit mixed-use development on a prime corner in Downtown. Walking distance to Lake Eola, Courthouse, Creative Village, and more.

SANFORD TOWN SHOPPES

Sanford



ADDRESS 1500 S. French Ave, Sanford, FL 32771
RETAIL GLA 88,800 SF
AVAILABLE 2,640- 3,200 SF
POPULATION (3 mi) 51,275
TRAFFIC 26,000+ AADT

Inline space available in Winn-Dixie anchored center. Excellent visibility and frontage on US 17-92. Close to historic Downtown Sanford.

SEVEN OAKS RETAIL

Wesley Chapel



ADDRESS SR 56 x Ancient Oaks Blvd. Wesley Chapel, FL 33544
RETAIL GLA 25,000 SF
AVAILABLE 1,200- 25,000 SF
POPULATION (3 mi) 54,093
AVG HH INCOME (3 mi) \$107,450

Premier retail opportunities are available in affluent Wesley Chapel. Ground floor retail space in the new mixed-use development- Seven Oaks Apartments.

UCF RETAIL CREATIVE VILLAGE

Downtown Orlando



ADDRESS 323 N Parramore Ave. Orlando, FL 32801
RETAIL GLA 27,485 SF
AVAILABLE 1,500- 6,000 SF
POPULATION (5 mi) 105,829
AVG HH INCOME (3 mi) \$104,677

Premier ground-floor retail opportunities are available in Creative Village on UCF/Valencia College campus. Seeking urban grocery, restaurants, and fitness.

THE YARD AT WATERSET

Apollo Beach



ADDRESS NWC Paseo Al Mar x Milestone Dr,
Apollo Beach, FL 33572
RETAIL GLA 27,485 SF
AVAILABLE 1,500- 6,000 SF
POPULATION (5 mi) 105,829
AVG HH INCOME (3 mi) \$104,677

Retail and restaurant opportunities available in family-driven Waterset/Apollo Beach community. Town center retail space ideal for local eateries, specialty stores, fitness users and more

VILLAGE SHOPPES AT ALTAMONTE

Altamonte Springs



ADDRESS 249 W SR 436, Altamonte Springs, FL 32714
RETAIL GLA 49,867 SF
AVAILABLE 4,350 SF
POPULATION (3 mi) 97,930
TRAFFIC 66,000+ AADT

Former salon spa space available in busy Altamonte corridor. Suite features open first floor with second floor mezzanine. Only space left in center!

CONTACT



LIC. REAL ESTATE BROKER

WILLOW FERRELLI
MANAGING PARTNER + BROKER
(C) 407.453.1858
willow@acrefl.com

SANDI BARGFREDE
MANAGING PARTNER
(C) 407.491.8149
sandi@acrefl.com

BROOKE WILLIAMS
VP SALES & LEASING
WEST COAST FLORIDA
(C) 407.721.3669
brooke@acrefl.com

SERENITY LORENZ
VP SALES & LEASING
CENTRAL FLORIDA
(C) 904.887.3302
serenity@acrefl.com



When it comes to **RETAIL LEASING**,
let ACRE Commercial do the
heavy lifting.

SERVING RETAIL MARKETS THROUGHOUT FLORIDA

CENTRAL FLORIDA | 47 E. ROBINSON STREET | SUITE 230 | ORLANDO, FL 32801
WEST COAST FLORIDA | 730 S. STERLING AVENUE | SUITE 212 | TAMPA, FL 33609
OFFICE | (407) 392.2055 | **FAX** | (321) 400.1138 | **WWW.ACREFL.COM**